

**CORPORATE CONCEPTS INTERNATIONAL, INC.**

***Boeing 747-400BCF  
For Sale Immediately***

***All information confidential and  
not for release to other parties or to the market.***



***Corporate Concepts International is pleased to offer to the market, as the mandated and exclusive agent, one of the most recognizable freighter aircraft in the skies – the Boeing 747-400. When it comes to the ultimate in long haul, large freighter aircraft the Boeing 747 stands unmatched. The B747-400BCF can carry over 245,000 pounds of cargo for 7,000+ miles. Qualified buyers or their representatives can call or email us with your questions or to request more information. Include some basic information about your company and your cargo requirements.***

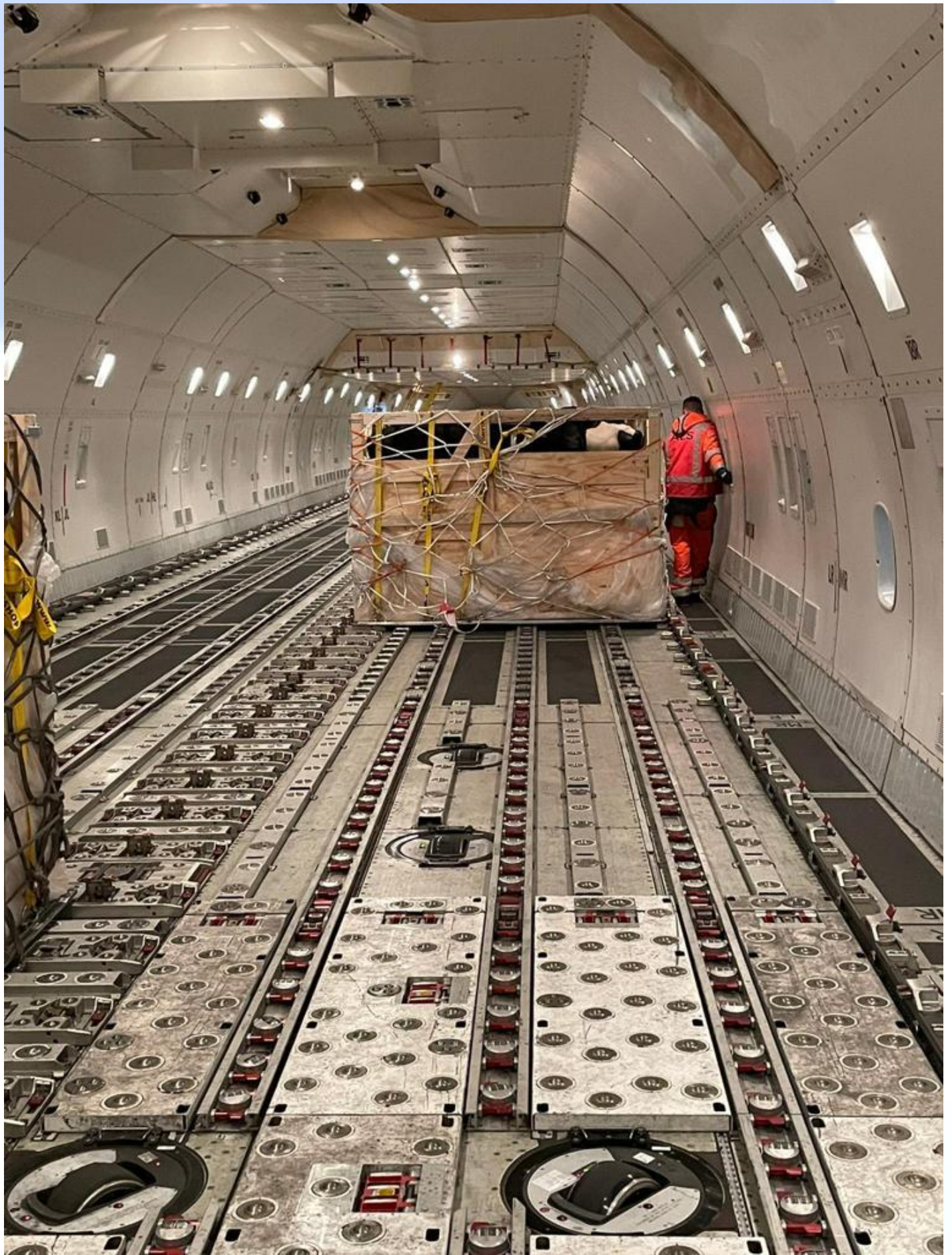












## **Key features of this Boeing 747-400BCF Freighter –**

- “D” Check accomplished in July 2019 – Next due in July 2025
- “C1, C2 & C4” checks in July 2021.
- Boeing Freighter conversion.
- Pratt & Whitney PW-4056 engines – Spare fifth engine with approx. 64,281 ETT can be included in sale.
- Max. takeoff weight 870,000 pounds – Cargo capacity over 245,000 pounds
- Fastest cargo jet available with 7,000+ mile range.
- Operational support from current AOC available.
- See a video of this Boeing 747-400BCF at [Boeing 747-400BCF video](#).

**For Sale “Where is, As Is” or As Negotiated and Agreed**

### **Aircraft Status**

**Serial Number: 24975**

**Year Model:**

**1991**

<b>Airframe -</b>	
<b>Total Time:</b>	<b>88,886 hrs.</b>
<b>Landings:</b>	<b>15,085</b>
<b>APU Model: P&amp;W PW901A</b>	
<b>APU Total Time:</b>	<b>31,022 hrs.</b>

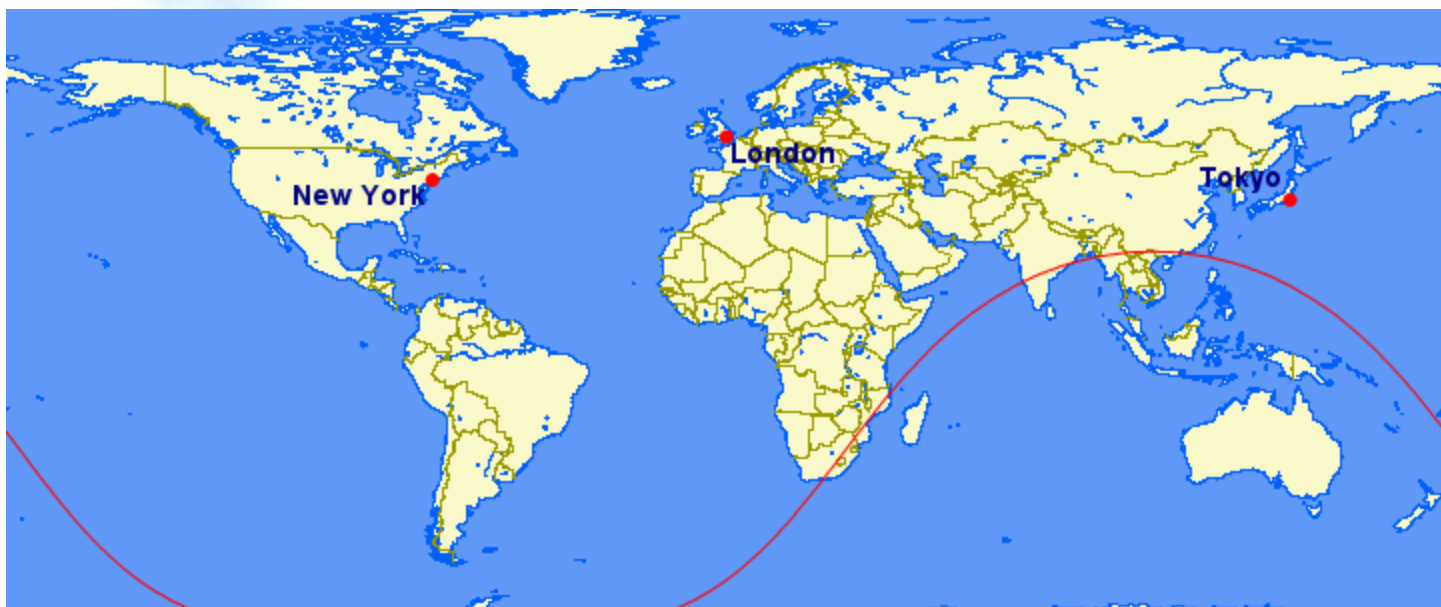
<b>Engines -</b>				
<b>Model: Pratt &amp; Whitney PW4056</b>				
	<b>#1 727641</b>	<b>#2 724476</b>	<b>#3 727729</b>	<b>#4 727491</b>
<b>TTSN Hours:</b>	<b>70,943 hrs.</b>	<b>64,633 hrs.</b>	<b>64,628 hrs.</b>	<b>63,827 hrs.</b>
<b>1<sup>st</sup> Limiter Due in:</b>	<b>8,533 cyc. HPT 2 Seal</b>	<b>474 cyc. HPT 2 Seal</b>	<b>3,223 cyc. HPT 2 Seal</b>	<b>6,798 cyc. HPT 2 Seal</b>







***Approximate Range for Boeing 747-400BCF from New York, USA  
(Subject to winds and weather)***



***Also Available – VIP Boeing 737 and VIP MD-87  
VIP Airbus A340 – [Click Here to View](#)***

***For full details and additional photos see [www.flycci.com](http://www.flycci.com) or contact:***

***Larry Wright  
[+1.704.906.3755](tel:+17049063755)  
[lwright@flycci.com](mailto:lwright@flycci.com)***

***Dennis Blackburn  
[+1.832.647.7581](tel:+18326477581)  
[blackburn@flycci.com](mailto:blackburn@flycci.com)***

CCI has obtained the aircraft specifications and information from the aircraft owner, and it is believed this information is reasonably accurate. The information and specifications are offered for marketing and presentation purposes only. All information and all specifications regarding the aircraft is the sole responsibility of the purchaser or lessee to verify upon their inspection and to satisfy themselves as to the reliability and accuracy of all information. CCI makes no representations or guarantees as to the information, specifications, qualifications or certification for any use or performance of the aircraft.