

CORPORATE CONCEPTS INTERNATIONAL, INC.

Presidential Boeing 747-400 VIP Seating with Combi Configuration



Corporate Concepts International is pleased to offer to the market one of the most recognizable aircraft in the skies – the Boeing 747-400. When it comes to the ultimate in Presidential, Ultra Long-Range aircraft, this Boeing 747-400 with its spacious and comfortable cabins, superior safety record and worldwide range make the 747-400 the preferred aircraft of many Presidential flight operations. This Presidential B747-400 has been ideally configured with a combi interior and offers a full new interior. The interior features VIP seating areas in the upper level while the Presidential stateroom with shower, conference and meeting areas and dining is on the main level. The Presidential suite on the main level is in the quietest zone on the aircraft. The aft cargo bay area can accommodate multiple cargo containers, race cars, racehorses or other high value cargo. This B747-400 has one of the lowest total flight hours of the entire Boeing 747 fleet. Our 747-400 is offered with a full “C” inspection included and this 747-400 can go immediately into service after the post-closing “C” inspection, which is expected to take 60 days. The 747 completed a heavy inspection at Lufthansa Technique less than 50 hours ago. A private showing can be arranged in the London area upon request. Finally, as a true Head of State, Presidential aircraft our 747-400 is equipped with a missile defense system, that can be activated if the next owner prefers to use this protective system. Call or email us with your questions or to request more information.

This Presidential 747-400 is subject to prior sale, change in price, or removal from the market until a Letter of Intent is signed by Buyer and Seller and a good faith, refundable is received into escrow.

Click here for [Boeing VIP747-400 Combi – Video and brochure](#)



























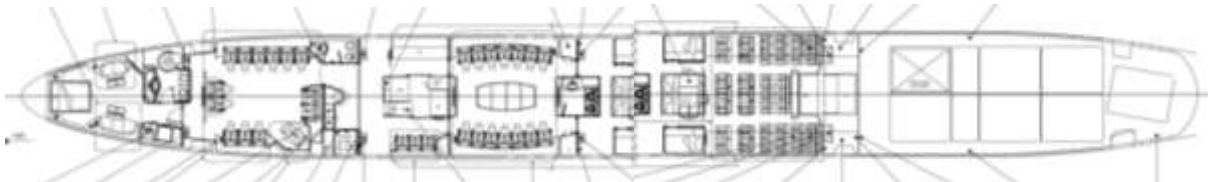












Key features of this Boeing VIP 747-400 Combi –

- *Seating for 91 passengers in ultimate comfort.*
- *New VVIP / Presidential interior.*
- *FANS-1/A and ADS-B modifications for true worldwide operations.*
- *Delivered with a fresh “C” Check accomplished post-closing.*
- *Max. takeoff weight 870,000 lbs. -- Current BEW 420,184.5 lbs.*
- *Approximately 7,500 miles range.*
- *Operational support from current AOC available.*
- *Missile defense system installed (needs to be activated).*

For Sale or Lease – Some Trades Considered.

Aircraft Status

Serial Number: 28551

Year Model: 1997

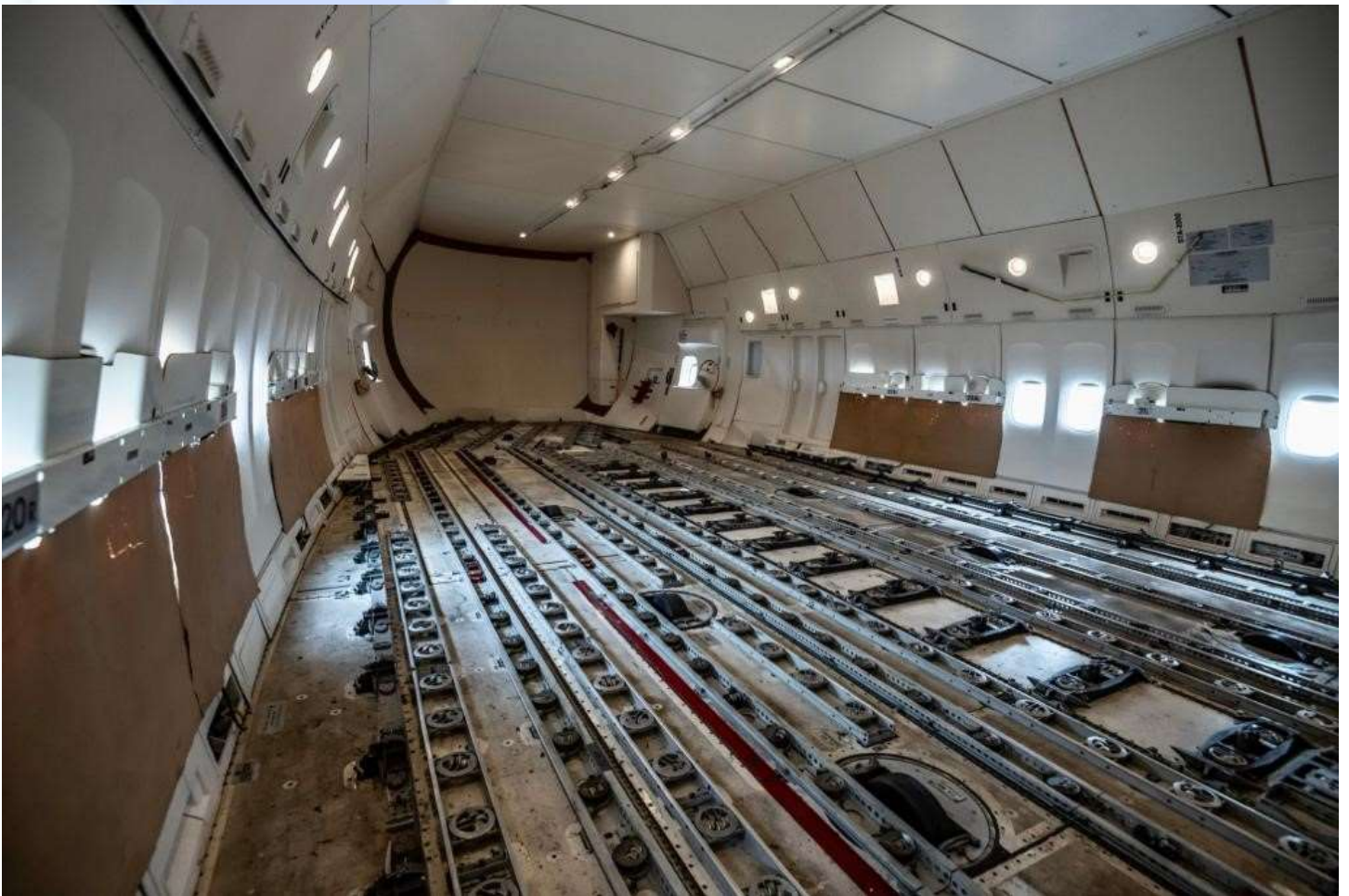
Airframe -	
Total Time:	21,102 hrs.
Landings:	4,241
APU Model: Honeywell	
APU Total Time:	31,016 hrs.

Engines -				
Model: General Electric CF6-80				
	#1	#2	#3	#4
TTSN Hours:	21,102 hrs.	20,344 hrs.	21,102 hrs.	21,102 hrs.
1 st Limiter Due in:	10,759 hrs. HPT Disks	10,875 hrs. HPT Disks	10,759 hrs. HPT Disks	10,759 hrs. HPT Disks





Cargo Bay







***Approximate Range for Boeing 747-400 from London
(Subject to winds and weather)***



For full details and additional photos see www.flycci.com or contact:

Larry Wright
[+1.704.906.3755](tel:+17049063755)
lwright@flycci.com

Chris Zarnik
[+1.919.264.6212](tel:+19192646212)
czarnik@flycci.com

Dennis Blackburn
[+1.832.647.7581](tel:+18326477581)
blackburn@flycci.com

CCI has obtained the aircraft specifications and information from the aircraft owner, and it is believed this information is reasonably accurate. The information and specifications are offered for marketing and presentation purposes only. All information and all specifications regarding the aircraft is the sole responsibility of the purchaser or lessee to verify upon their inspection and to satisfy themselves as to the reliability and accuracy of all information. CCI makes no representations or guarantees as to the information, specifications, qualifications or certification for any use or performance of the aircraft.